

Hult Center for the Performing Arts Technical Specifications

Soreng Theater



Technical Director, Brian Ference
541.682.5773
Brian.R.Ference@ci.eugene.or.us

Asst Technical Director, Mike Carpenter
541.682.2747
Michael.C.Carpenter@ci.eugene.or.us

Stage Specifications:

Stage Floor: Stage floor is sprung wood surface.

Dimensions: 98' Wide
30' 3" Edge to Back Wall

Proscenium Width: 38'-50' adjustable
Leg Opening 47' (23'-6" o/c)
Clear wing space 10' SR, 18' SL
Stage Height above audience floor 3' 2 5/8"
Stage Floor to Catwalk 25'-6"

House Rigging: (Permanent--Non Moveable)
No main curtain
Dead-hung Downstage Traveler (9' from edge of stage)
2 sets of Dead-hung Legs (12' x 25')
Fixed upstage black traveller
Fixed upstage white cyc
Permanent motorized orchestra shell
Only available rigging is to deadhang from a catwalk
There are no line sets and no fly system in this theater

Lighting System:

ETC "Sensor" dimming system
200 circuits @ Dimmer per ckt.

Control Board: E.T.C - Obsession II 750
Followspots
2 Lycian 400 Super Arc

Temporary Power Hookup: Main Company Switch is stage left and is a 200A 3ph, 5 wire disconnect.
This switch cannot be used if the house sound system is in operation

Sound System:

SPL Limit: Maximum allowable sound pressure in Soreng Hall is 105db for no more than 4 seconds.

House System:

Mains: JBL Array Series Cabinets driven by Crown Macrotech amplifiers

Rev. 031612 AKH

FOH Console & Electronics: Allan & Heath 3300
Yamaha LS9-16
Cassette, CD, DAT playback

Monitors: 2 JBL Studio Monitors (15" & 2") as side fills driven by 800watt
Carver Amplifier

Dressing Rooms:

Total accommodations for approximately 30 people.

Two chorus dressing rooms downstairs complete with lights, mirrors, chairs, and sinks for about 10 people each.

Men's and Women's restrooms with showers are across the hallway.

One dressing room backstage with lights, mirrors, chairs, sofas, & restroom.

SORENG LIGHTING INVENTORY

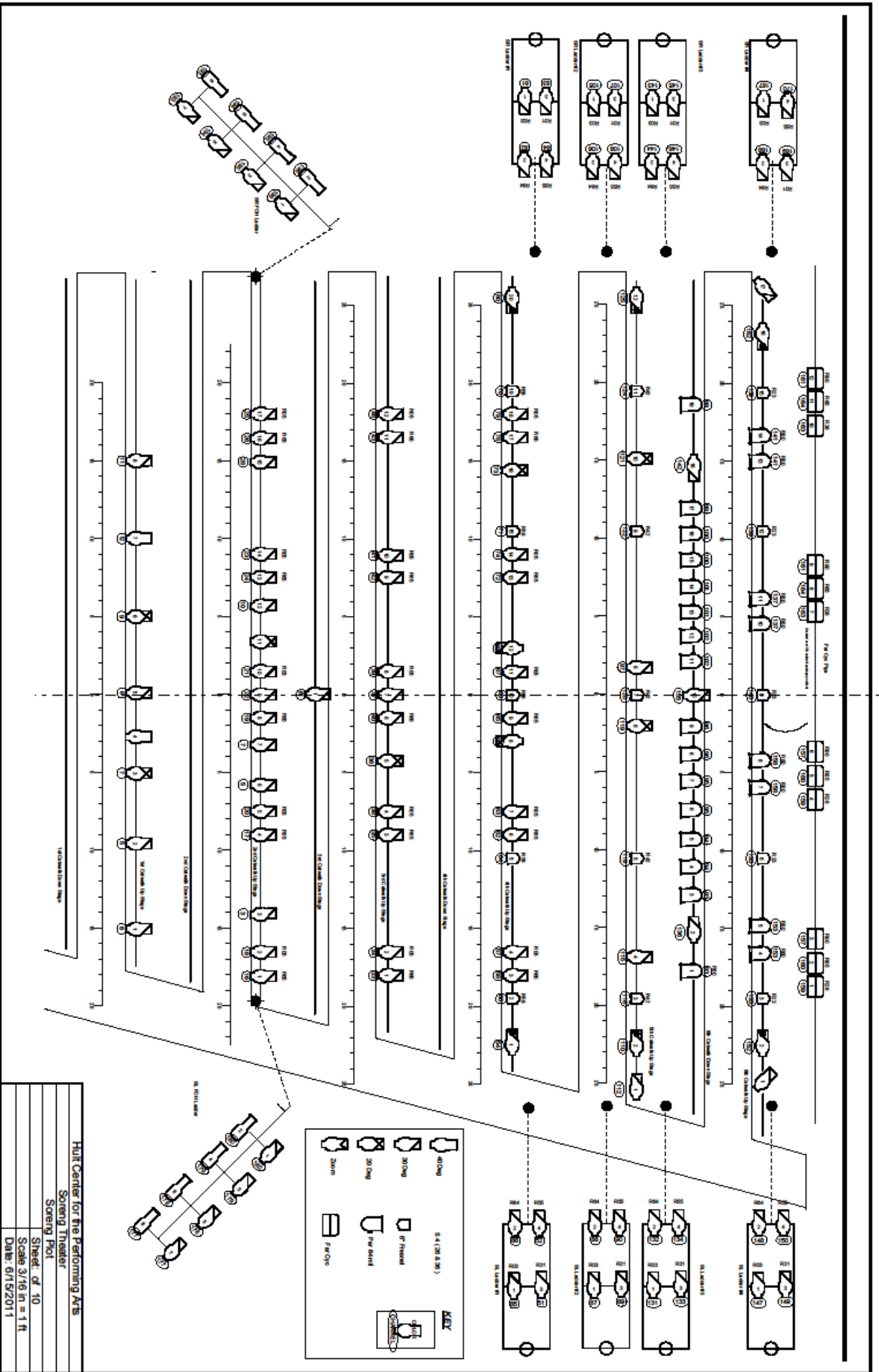
2/1/2010

TYPE	AVAILABLE	WATTS	PURPOSE
COLORTRAN 40 DEG.	10	1000	<i>SPARE</i>
COLORTRAN 30 DEG.	11	1000	<i>SPARE</i>
COLORTRAN 20 DEG.	2	1000	<i>SPARE</i>
COLORTRAN 10 DEG.	5	1000	<i>SPARE</i>

House Plot

COLORTRAN 30 DEG.	30	1000	2 COLOR FOH WASH
ZOOM ELLIPSE	18	1000	LADDERS (TOP)
COLORTRAN 30 DEG.	18	1000	LADDERS (BOTTOM)
6" FRESNEL	21	750	3 COLOR TOP LIGHT
PAR 64 MFL	12	1000	1 COLOR BACK LIGHT
FAR CYC SINGLE CELL	12	1000	3 COLOR CYC WASH
SOURCE 4 PAR	5	750	SYMPHONY BACK
SOURCE 4 - 26 DEG.	12	750	HOUSE BOOMS
COLORTRAN 30 DEG.	10	1000	HOUSE BOOMS
COLORTRAN 30 DEG.	6	1000	HIGH SIDE GOBOS

Note: Please contact Tech Services for availability



Hull Center for the Performing Arts
 Seating Theater
 Seating Plot
 Sheet of 10
 Scale 3/16 in = 1 ft
 Date: 6/15/2011